

A modern laboratory or office environment with light-colored wooden cabinetry and shelving. The shelves are filled with various glassware, including beakers, flasks, and bottles. A man in a dark suit stands on the left, looking towards a group of three people (two men and one woman) who are gathered around a counter. One woman is wearing a white lab coat and holding a small blue bottle. The background features a white wall with a hanging plant and a chalkboard with mathematical equations. The floor is made of light-colored wood.

This is ORIENTAL

CORPORATE PROFILE

ORIENTAL

Create the Discovery Moment

ORIENTAL was founded in 1978 as a manufacturer developing laboratory equipment such as laboratory furniture and fume hoods.

Now we create environments where researchers can passionately engage in challenging new innovations by the power of engineering and design.

We actively engage researchers, fostering interaction and generating insights through various aspects of environmental enhancement, including architecture, spaces, facilities, and the cultivation of an innovation culture.

Constantly stand in the researcher's shoes and resolve any issues present in laboratories.

This is our mission.



ORIENTAL

Name ORIENTAL GIKEN Inc.

Founded October 1978

Capital JPY One hundred million

Employees 180 as of Nov.2022

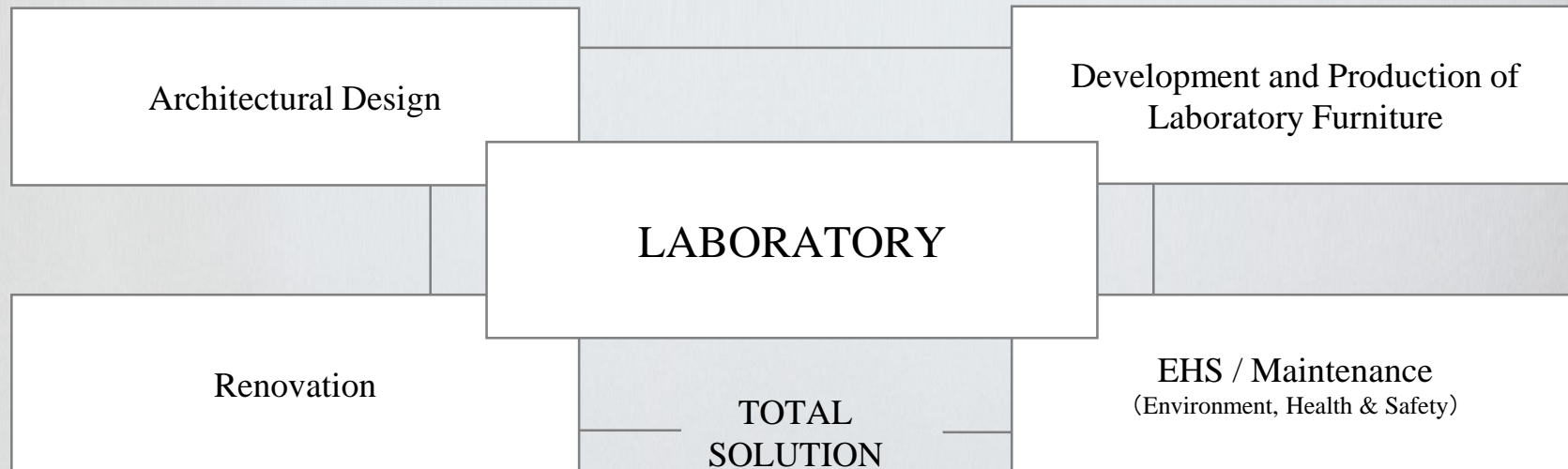
Location HQ Tokyo, 8 sales offices, 2 R&D/Production sites

Services

- Total Engineering of laboratory
- Architectural design of laboratory
- Lab renovation
- Developing and manufacturing of laboratory furniture and equipment
- EHS (work environment measurement and maintenance services)



More than 40 years experience as Laboratory Engineering Company





Laboratory FURNITURE & EQUIPMENT



Pharmaceutical & Chemical



Enclosure



Glove Box



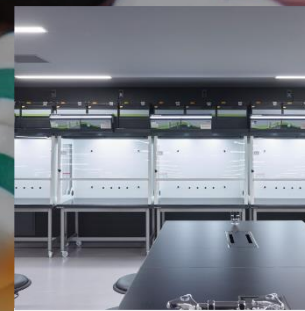
Balance Hood



Down-flow Booth



Fume Hood



Ductless Fume Hood



Stability Testing Room



Chemical Management



Containment Testing

Electronics & Semiconductor



Clean Room



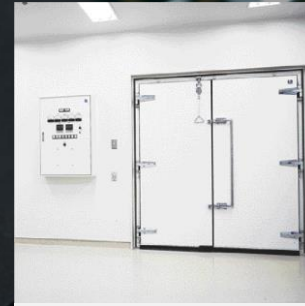
Air Shower



Clean Bench



Clean Fume Hood



Constant temperature and humidity chamber



Dry Room



Containment Room



Specialized HVAC



Glove Box

Medical & Healthcare



Bio Safety Cabinet



Air Purifier "Aer"



Negative Booth



BSL Room/Facility



PCR Testing Room



Clean Room



Air Purifier "Halo"



Bio Clean Bench



Sputum collection booth

Environmental Testing Room/Chamber



Clean Room



Air Shower



Stability Testing Room



Shield Room



Dry Room



Climate Chamber



Constant temperature and humidity
chamber



BSL Room/Facility



PCR Testing Room



Laboratory FURNITURE

Feel Emotion



Emotion New lab furniture

Exploration, excitement and elevation

That is what we intend to inspire
with this new lab furniture series..





DAHLIA All-steel lab furniture

Robust, minimalistic but sophisticated

All-steel lab furniture

BUTTERFLY Adaptable lab furniture

For greater proactivity and freedom

A new lab furniture that adapts to the people and the environment



A photograph of a modern laboratory setting featuring two Oriental fume hoods. The hoods are white with black frames and have the brand name 'ORIENTAL' and 'Fume Hood' printed on the top. The left hood contains a microscope and other lab equipment. The right hood contains various bottles and test tubes. Two black swivel chairs are positioned in front of the hoods. To the left of the hoods is a dark grey chemical storage cabinet with multiple drawers. The background is a dark, wood-paneled wall. The floor is made of light-colored tiles. The overall lighting is soft and focused on the equipment.

Laboratory EQUIPMENT

Fume hood “RACINE”

The new standard for fume hoods with superior safety, operability, and expandability.。

Comply with ASHRAE-110 and EN14175-3



Benchtop hood “Crystalline”

Openness without obstacles.

While prioritizing safety,
we have pursued simplicity.

Less is more



Push-Pull Exhaust Hood “Piano”

A new style of exhaust hood with improved safety, energy efficiency and comfort.





HEPA-Filtered Partition “Aer”

Powerfully and speedily cleans air in the room and also removes all unpleasant odors..

Biological safety on the bench

Benchtop Biosafety Cabinet “Olive”

Provides an ample workspace on a compact body.

Usable in various places such as laboratory, hospital, dispensary, clinic, etc.

Comply with JIS K3800*

*Japanese biosafety cabinet standard, developed based on NSF/ANSI 49



QUALITY ASSURANCE



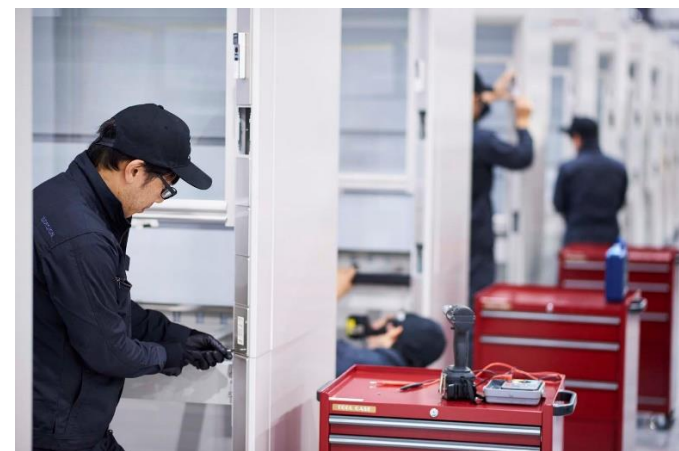


PRODUCTION CENTER

Delivering the highest level of quality to our customers

Our commitment to products is thorough from development to production and quality control.

We deliver our solutions right here at the PRODUCTION CENTER.





Manufacturing and Quality Control

Beyond Global Standards

We actively incorporate various international standards, such as EN (European) and ANSI/ASHRAE (US) standards, and set strict in-house standards. We implement thorough quality control to ensure that our solutions deliver the best performance to our customers.



ASHRAE-110 (米国規格) を
クリアするヒュームフード



AFNOR NFX 15-211 (フランス規格) を
クリアするダクトレスヒュームフード



ISO 9001 (品質) 認証取得
ISO 14001 (環境) 認証取得



NSF 49 (米国規格) を
クリアする安全キャビネット



EN 14175-3 (ヨーロッパ規格) を
クリアするヒュームフード



ISPE (国際製薬技術協会) SMEPAC
に対応した封じ込め性能評価試験

Manufacturing and Quality Control

The Largest Testing Facility

In cooperation with Tintschl of Germany, the leader of the EN Standards Committee, we have developed a test room for the EN14175-3 standard.

The production center is equipped with a test system that can accommodate the world's largest W2400mm fume hood.



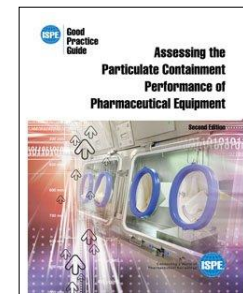


Manufacturing and Quality Control

Containment Performance Verification - SMEPAC

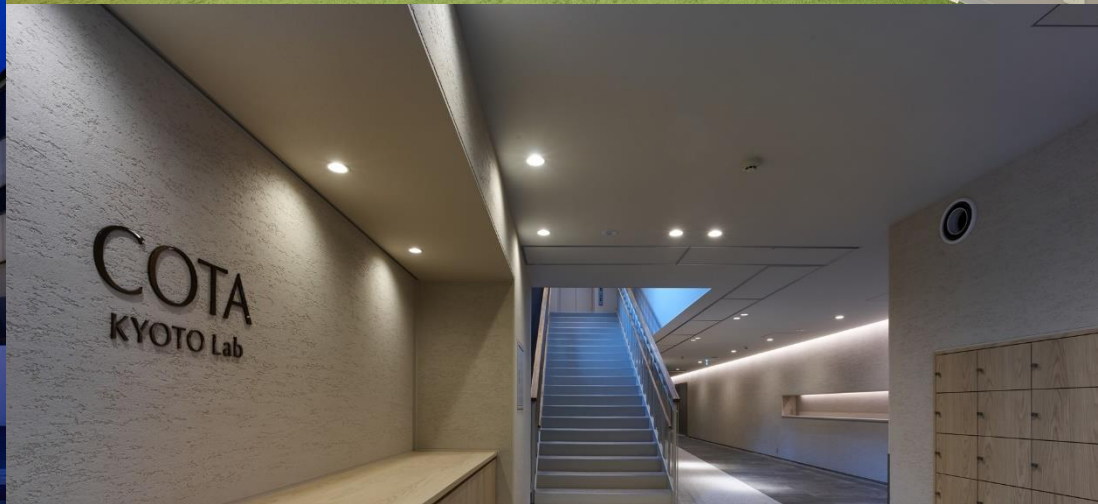
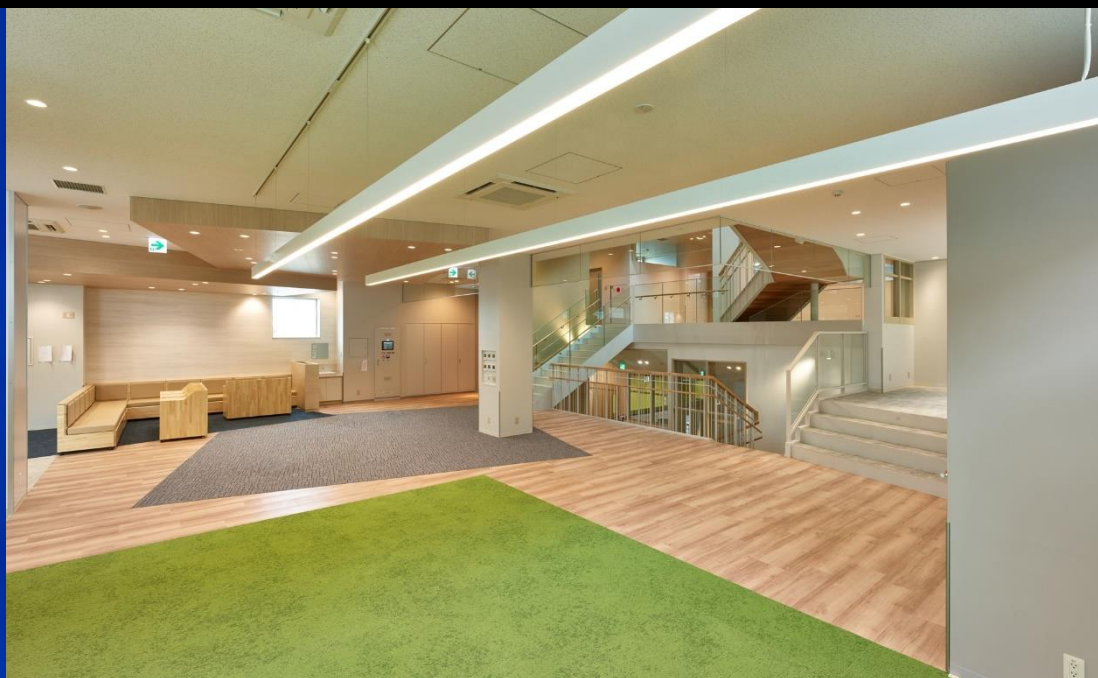
Surrogate Powder Testing (SMEPAC) is a method of evaluating the performance of containment facilities used in the research, development, and production of anticancer drugs and other products which defined by ISPE.

We are one of the few organization that can perform this comprehensive testing.



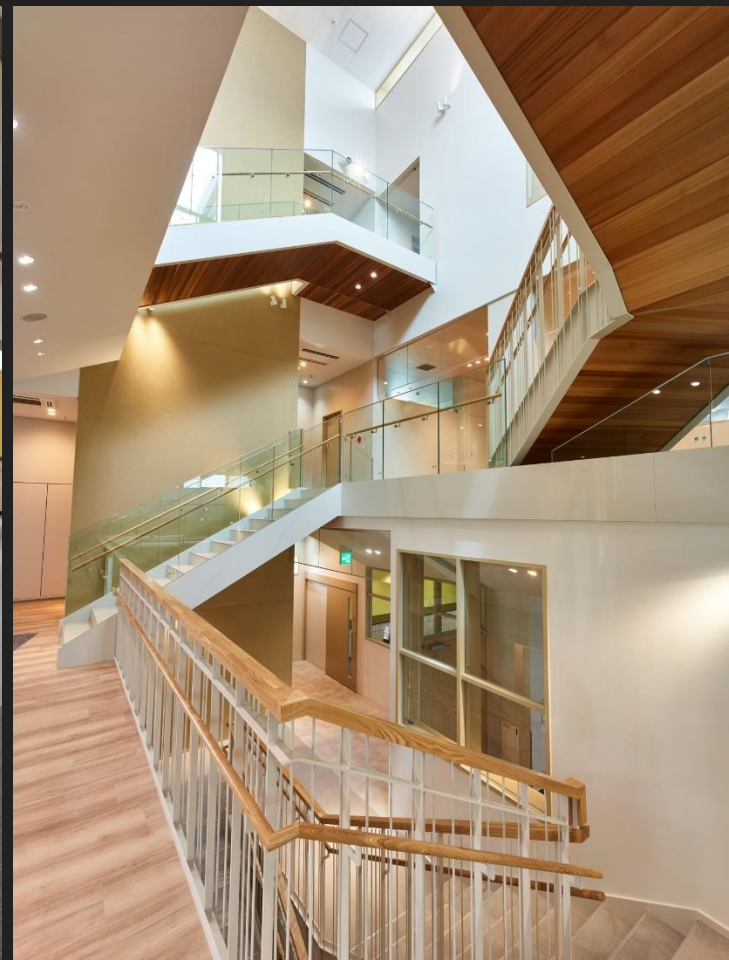


REFERENCE PROJECT



Chemical

COTA KYOTO Lab
COTA CO., LTD.







Chemical

Chemical Company





Pharmaceutical

**Quality Control Center
FUJIMOTO CHEMICALS CO., LTD.**





Biotechnology

Odaiba Laboratory
Varinos.





Research Laboratory

Tama Laboratory
Japan Food Research Laboratories





TOKYO HEADQUARTER



Tokyo Headquarter

Our headquarter building is located in Kanda, one of the busiest areas in Tokyo.

This 10-story building not only houses offices but also includes a showroom and our own laboratory.



10F “Discovery Lounge”



10F “Discovery Lounge”



10F “Discovery Lounge”



10F “Discovery Lounge”



9F PLANUS & Studio O+P

ORIENTAL GIKEN INC. ALL RIGHTS RESERVED.



9F PLANUS & Studio O+P

ORIENTAL GIKEN INC. ALL RIGHTS RESERVED.



7F ORIENTAL

ORIENTAL GIKEN INC. ALL RIGHTS RESERVED.



5F “PARTNERs Lounge” & Laboratory



1F “X/S Lounge”



X/S

Showroom, our brand experience

ORIENTAL



2F “X/S Showroom”

ORIENTAL GIKEN INC. ALL RIGHTS RESERVED.



2F “X/S Showroom”